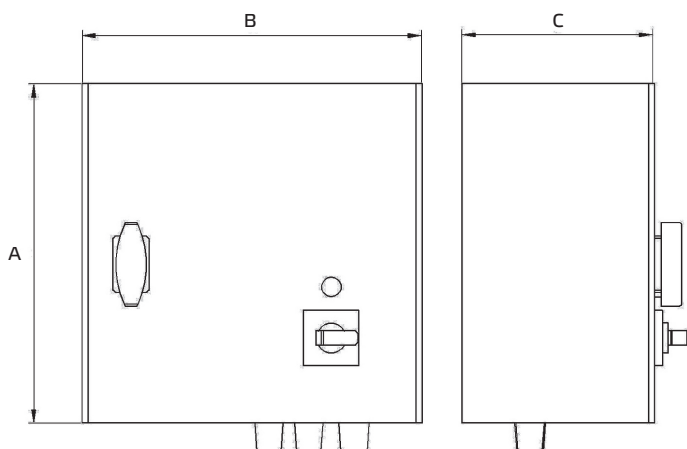


Transformer TDM G

1/2

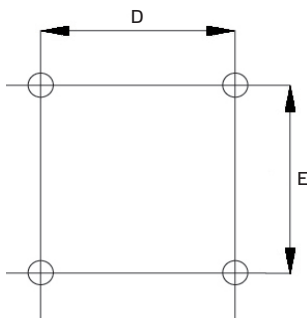


| Type | ID | I _{max.} A | Fuse A | A mm | B mm | C mm | D mm | E mm | Weight kg |
|-----------------|--------|------------------------|-----------|---------|---------|---------|---------|---------|--------------|
| TDM 025G | 111569 | 2,5 | 5,0 | 325 | 300 | 175 | 255 | 255 | 12,6 |
| TDM 040G | 111570 | 4,0 | 8,0 | 425 | 300 | 175 | 255 | 355 | 18,1 |
| TDM 060G | 111571 | 6,0 | 10,0 | 425 | 300 | 235 | 255 | 355 | 21,7 |
| TDM 080G | 111572 | 8,0 | 14,0 | 425 | 300 | 235 | 255 | 355 | 27,0 |
| TDM 110G | 111573 | 11,0 | 18,0 | 430 | 400 | 235 | 255 | 355 | 36,2 |

- Transformer TDM G
- 400 V 3~, 50/60 Hz
- With motor protection
- With contact for gas solenoid valve
- Surface mounting
- Metal housing
- Max. ambient temp 35 °C
- Protection Class IP 54

| Type | Output voltage U _A V | | | | |
|-----------------|------------------------------------|-----|-----|-----|-----|
| | 1 | 2 | 3 | 4 | 5 |
| TDM 025G | 130 | 180 | 230 | 300 | 400 |
| TDM 040G | 130 | 180 | 230 | 300 | 400 |
| TDM 060G | 130 | 180 | 230 | 300 | 400 |
| TDM 080G | 130 | 180 | 230 | 300 | 400 |
| TDM 110G | 130 | 180 | 230 | 300 | 400 |

Mounting :

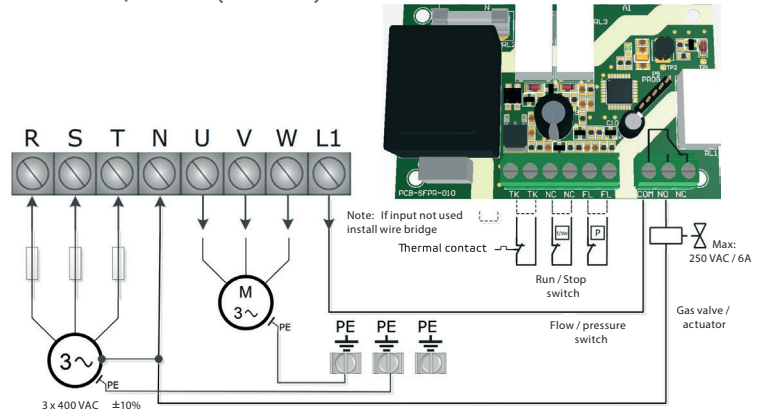


Legend

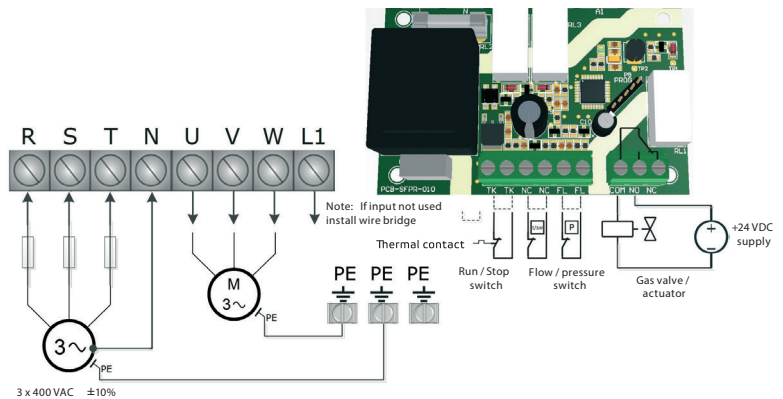
- U_A = Output voltage
- I_{max.} = Max. Operating Current

Wiring diagrams :

1 a. 230 VAC gas valve / actuator supplied from L1, N terminals with external fuse protection on phase R (max. 6 A)



1 b. Gas valve / actuator supplied from external 24 VDC supply



Wiring and connections :

| | |
|--------------------|--|
| R, S, T | Supply voltage 3 x 400 VAC ± 10 % - 50 / 60 Hz |
| N | Neutral |
| PE | Earth terminal |
| OUTPUTS | |
| L1, N | Unregulated output, 230 VAC / 2 A |
| U, V, W | Regulated output to the motor (0 / 130 / 180 / 230 / 300 / 400 VAC) |
| PE | Earth terminal |
| COM, NO, NC | Potential free contact output, (230 VAC / 6 A) |
| INPUTS | |
| TK, TK | Thermal contacts |
| NC, NC | Run / Stop contacts, normally closed |
| FL, FL | Flow / pressure sensing contacts |
| Connections | Cable gland clamping range: 8-13 mm Cable cross section: depends on the article |