

Short bends with gaskets and short female bends

# BPKL-90/BPKFL-90



## Description

Short pressed bends are designed for building ventilation systems based on SPIRAL ducts and plain ducts. Seam welds provide air tightness class D without the need to use any other sealants. In ventilation and heat recuperation systems, the double EPDM gasket provides air tightness class D according to EN 12237. The piece is connected with a duct by inserting one into the other. The short bending radius helps installing the ductwork under a suspended ceiling with a limited clearance. BPKFLT bends feature a female joint for direct connection to the mounting frames of various air valves (e.g. KN-RM or KWO-RML).



There is also available version with a female end - **BPKFL** code or with two female ends - **BPKFF** code.

**Available materials - Product code example**  
BPKL-... -90 - galvanized steel sheet

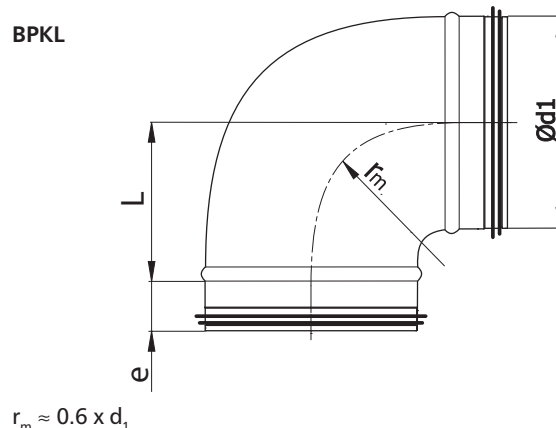
### Product code example

Product code: **BPKL- aaa - 90**

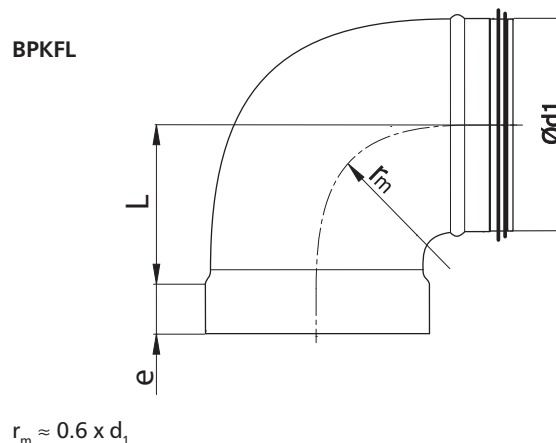
type \_\_\_\_\_  
Ød<sub>1</sub> \_\_\_\_\_  
angle \_\_\_\_\_

## Dimensions

**BPKL**



**BPKFL**



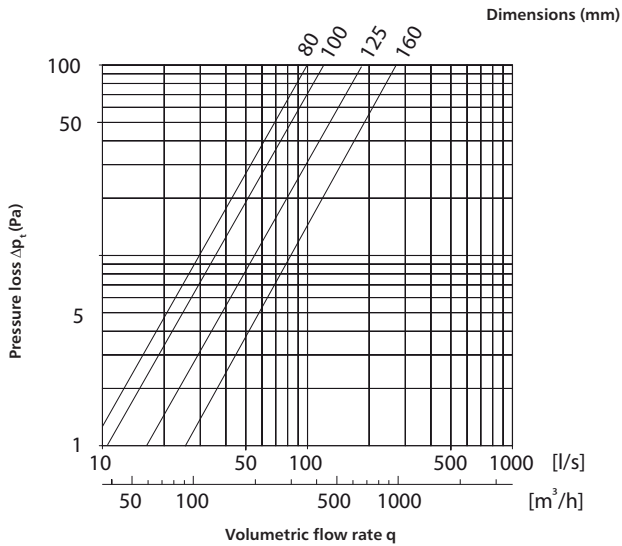
Ød <sub>1 nom</sub> (mm)	L (mm)	e (mm)	Weight (kg)
80	52	36	0.2
100	62	36	0.3
125	75	36	0.4
150	87	36	0.5
160	92	36	0.6
200	112	36	0.8

Technical specifications for 90° pressed and segmented bends

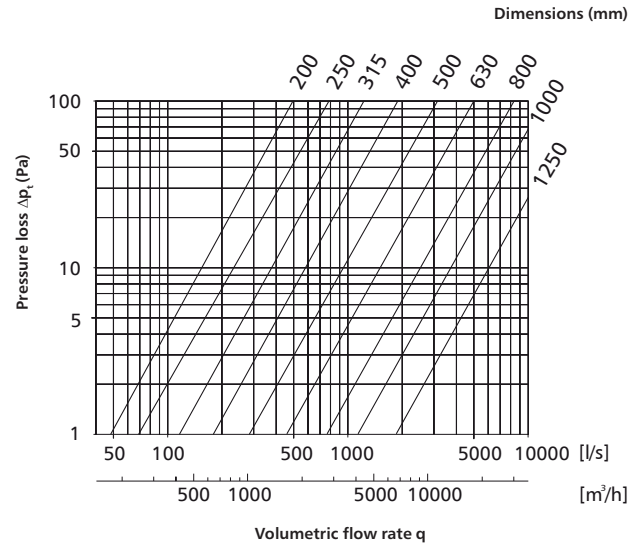
# BPKL/BPL/BPDL/BSKL/BSL/BSDL

## Technical specifications

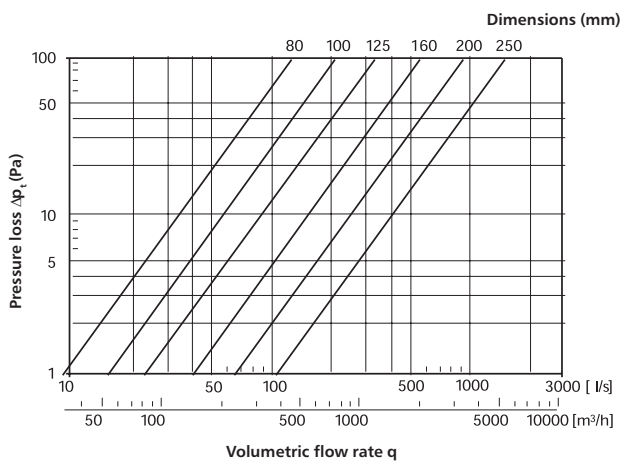
Flow chart for BPKL-90/BPK-90/BPKFL-90/BPKF-90



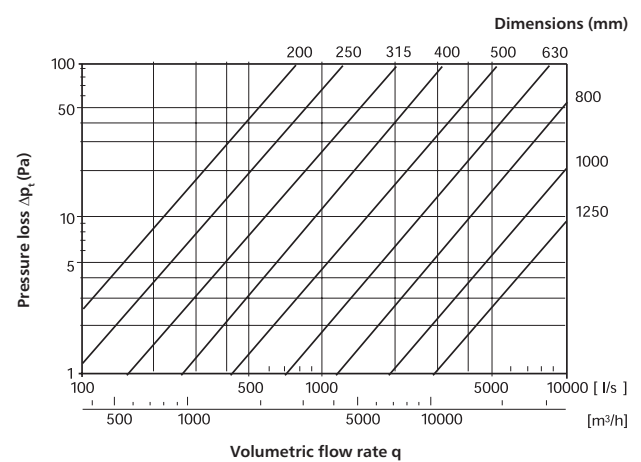
Flow chart for BSKL-90/BSK-90



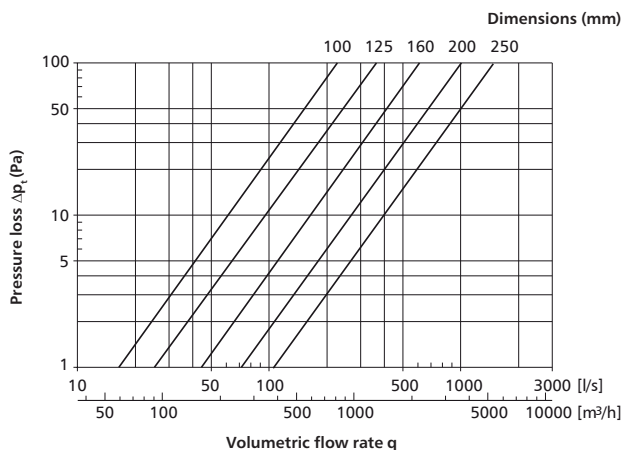
Flow chart for BPL-90/BP-90/BPL-K-90/BP-K-90



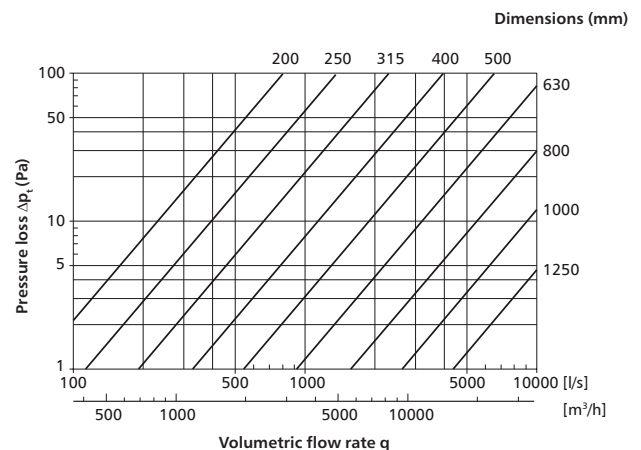
Flow chart for BSL-90/BS-90



Flow chart for BPDL-90/BPD-90



Flow chart for BSDL-90/BS-90



Short pressed male-to-female bends with gaskets

# BPKL-45/BPKFL-45



## Description

Short pressed bends are designed for building ventilation systems based on spiral ducts and plain ducts. Seam welds provide air tightness class D without the need to use any other sealants. In ventilation and heat recuperation systems, the double EPDM gasket provides air tightness class D according to EN 12237. The piece is connected with a duct by inserting one into the other. The short bending radius helps installing the ductwork under a suspended ceiling with a limited clearance. BPKFL bends feature a female end for direct connection to the mounting frames of various air valves (e.g. KW-S-RM or KNT-RML).



There is also available version with a female end - **BPKFL** code  
or with two female ends - **BPKFF** code

**Available materials - Product code example**  
BPKL-...-45 - galvanized steel sheet

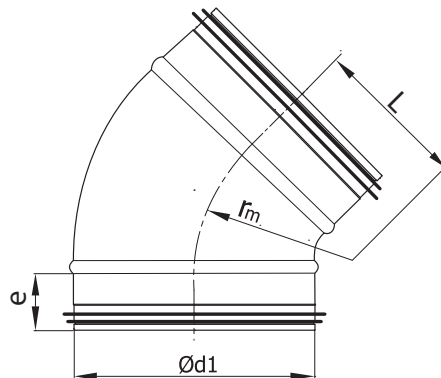
### Product code example

Product code: **BPKL- aaa - 45**

type \_\_\_\_\_  
Ød<sub>1</sub> \_\_\_\_\_  
angle \_\_\_\_\_

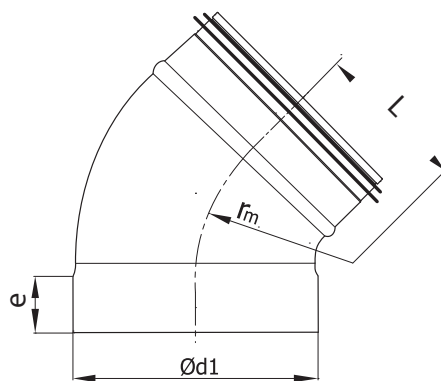
## Dimensions

**BPKL**



$$r_m \approx 0.6 \times d_1$$

**BPKFL**



$$r_m \approx 0.6 \times d_1$$

Ød <sub>1 nom</sub> (mm)	L (mm)	e (mm)	Weight (kg)
80	52	36	0.1
100	62	36	0.2
125	75	36	0.3
150	87	36	0.3
160	92	36	0.4
200	112	36	0.5