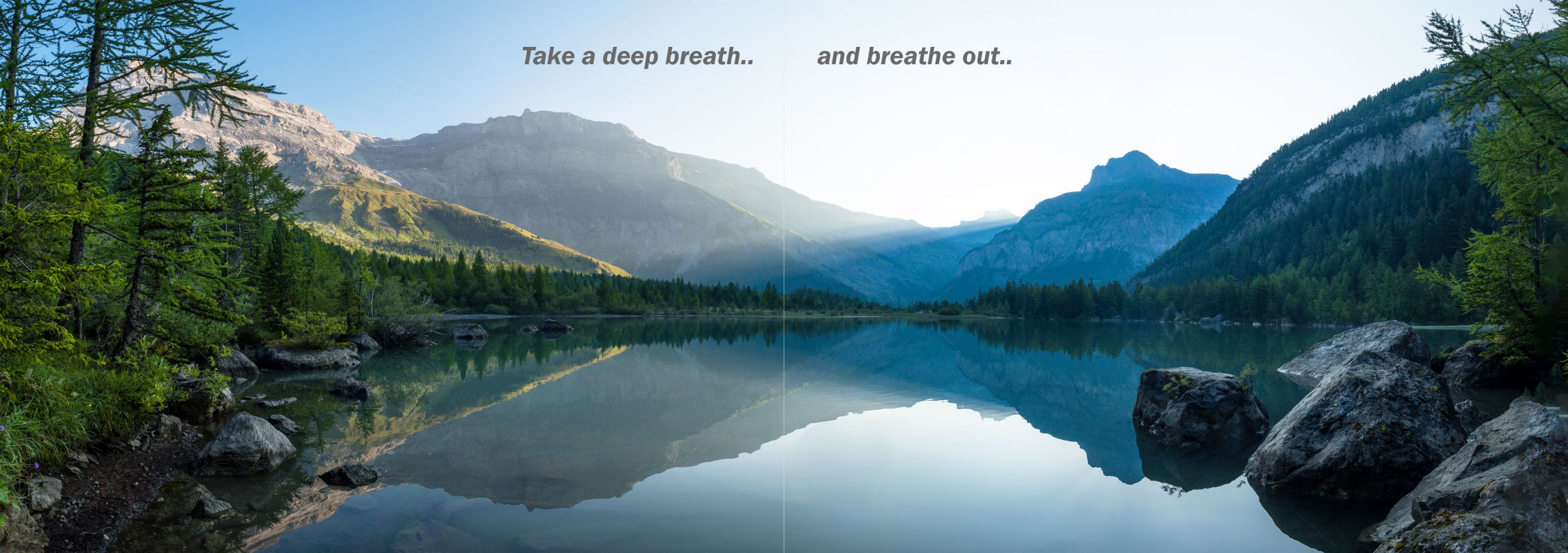
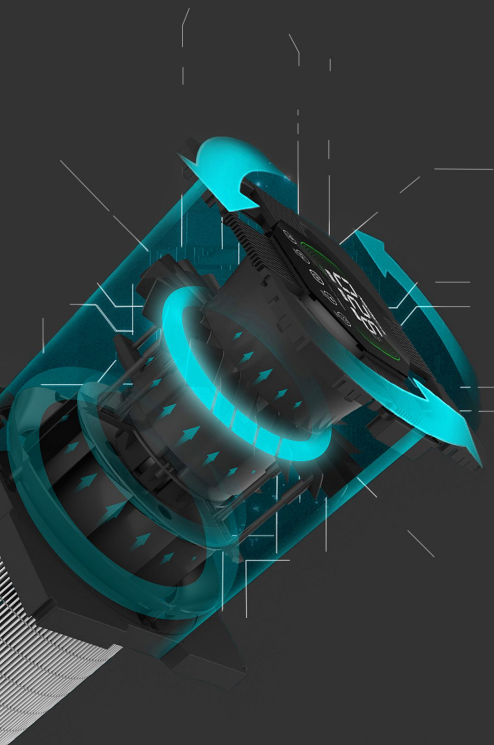




Take a deep breath..

and breathe out..





Maximum protection

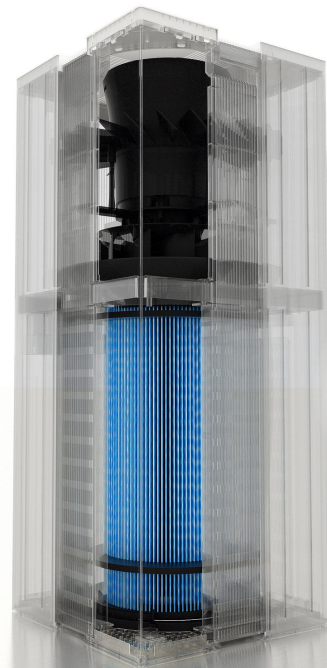
AirExchange® offers the latest innovations in the field of professional air cleaning. Because of a unique combination of filtering techniques the system optimizes and protects your health.



VORTEX technology

By using our unique and patented **VORTEX** technology the air range is increased and it is possible to clean multiple, contiguous rooms (up to 120m²) effectively.

The **VORTEX** technology provides an uplift airflow that creates a natural air circulation within the room. Filtered air particles are propelled out of the top of the device into the environment. Contaminated air particles, which are heavier, will descend and as a result will be pulled towards the bottom of the device where they will be neutralized.



Excellent filter performance

By creating a powerful updraft and using our 360° degree filter combination, a maximum filter capacity is utilized. With this capacity it is possible to achieve a super fast and effective purification.

UV-C technology

The 253.7nm, ultraviolet radiation damages the photolytic (DNA/RNA) processes in the cellstructure of the micro-organisms, causing them to deteriorate and be permanently eliminated.

Using this UV-C technology it is possible to have an elimination effectiveness of **>99.99%**.



Always and everywhere in control

With our convenient application you can read and operate your AirExchange® air cleaning system anytime and anywhere.

Whether you are at home or at work, you are always in control!

The application is available on Google Play and in the App Store.



A super smart
and automated
SMART- mode



Advanced air quality indicator

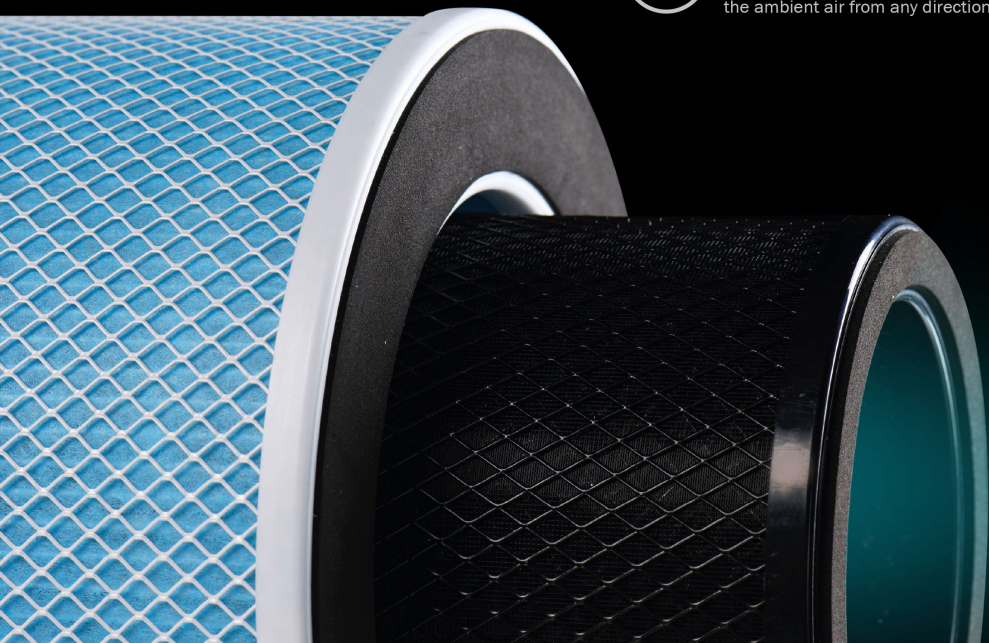
The AirExchange® air cleaning systems measure the ambient air quality and automatically adjust the cleaning program accordingly.

- Green** The air quality is perfect! You can now enjoy and take full advantage of the clean ambient air.
- Orange** The air quality is not OK. The air in the room is insufficiently filtered. Activate the 'SMART' mode to purify the air.
- Red** The air quality is bad. You are strongly advised not to enter the room. Activate the 'SMART' mode to purify the air.



Maximum cleaning all around

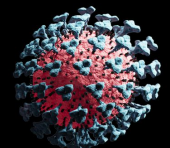
The 360° filter combination provides a maximum cleaning capacity by filtering the ambient air from any direction.



Eliminate harmful particles

The **HEPA filter** with medical H14 class removes more than 99.995% of particles with a size of 0.10µm or larger.

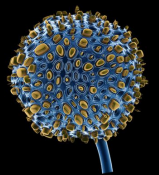
The **Carbon filter** with activated carbon catches volatile organic compounds (TVOC), such as gasses, high-density smoke, vapors and other harmful substances.



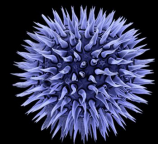
Viruses 0.12µm
c.q. SARS-CoV-2 / H1N1



Bacteria 1µm
c.q. S. Aureus



Fungi 1-30µm
c.q. S. Chartarum



Pollen 10-100µm
c.q. Grass pollen

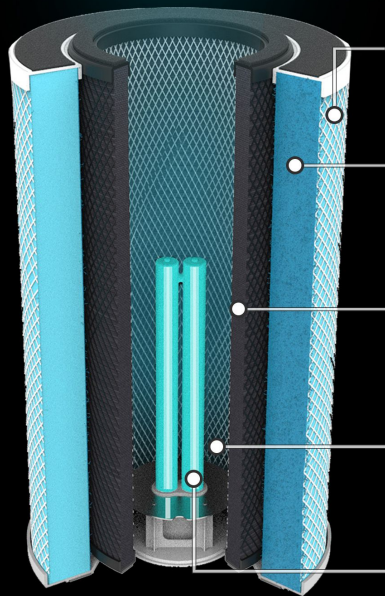


Volatile substances 0.05µm
c.q. Formaldehyde



(fine)dust 0.3-100µm
c.q. Soot particles

Maximum filter effectiveness



Anti-bacterial filter with fiber & sterilization fabric

The antibacterial pre-filter is the first protective layer against (fine) dust, hair, pollen and skin flakes.



HEPA filter with medical H14 class

The HEPA (High Efficiency Particulate Air) H14 antimicrobial peptide filter has been developed for use in the aerospace industry and purifies fungi, bacteria, pollen, viruses, (fine) dust and other substances with an effectiveness of 99.995%.



Carbon filter with activated carbon

The Carbon filter with active carbon removes odors, gasses, smoke, oils, greases and vapors. In addition, the carbon filter also cleans volatile organic compounds (TVOC), formaldehyde, benzene, xylene and other harmful substances.



TiO2 filter with natural ionization

The self-cleaning, photocatalytic Titanium Dioxide (TiO₂) mesh filter eliminates residual microorganisms such as viruses, bacteria and fungi by discharging particles (No ESP. (Electronic) ionization with toxic ozone gas is used).



UV-C light treatment technology

UV-C is an ultraviolet, electromagnetic, shortwave radiation of 253.7 nm that damages the photolytic processes in the cell-structure of microorganisms that eliminates them permanently.



750-T BLACK

The AirExchange® 750-T Black is executed in a brushed and black anodised, aluminum housing.

Technical specifications:

- Maximum cleaning power (Clean Air Delivery Rate - CADR) of 750m³ / hour
- Cleans areas up to 120m²
- 220V / AC (50-60Hz)
- 95W power
- Standard noise level: <22dBA (almost silent)
- Maximum noise level: <70dBA
- Dimensions: 330x330x806mm
- Weight: 17kg
- **CE, CB, ROHS** and **FCC** certified



750-T Product features

- Sleep mode and automatic night detection
- Real-time temperature & humidity
- Clear touchscreen control panel
- Remote & application control
- Super-easy filter replacement
- Automatic filter monitoring
- SMART or MANUAL mode
- Tip-over protection
- 4 air flow speeds
- Timer function
- Plug and play
- Child lock



Ultimate precision

The AirExchange® systems are produced with the utmost precision. This way you are assured of only the highest quality.



750-T ANTHRACITE

The AirExchange® 750-T Anthracite is executed in a brushed and anthracite anodised, aluminum housing.

Technical specifications:

- Maximum cleaning power (Clean Air Delivery Rate - CADR) of 750m³ / hour
- Cleans areas up to 120m²
- 220V / AC (50-60Hz)
- 95W power
- Standard noise level: <22dBA (almost silent)
- Maximum noise level: <70dBA
- Dimensions: 330x330x806mm
- Weight: 17kg
- **CE, CB, ROHS** and **FCC** certified

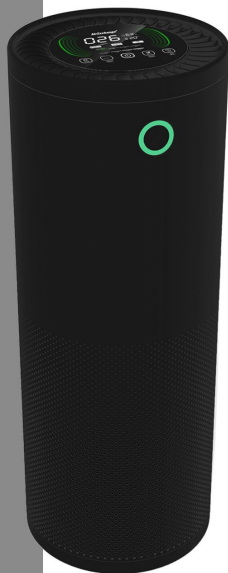


600-T BLACK

The AirExchange® 600-T Black is executed in a black powder coated, steel housing.

Technical specifications:

- Maximum cleaning power (Clean Air Delivery Rate - CADR) of 600m³ / hour
- Cleans areas up to 100m²
- 220V / AC (50-60Hz)
- 85W power
- Standard noise level: <21dBA (almost silent)
- Maximum noise level: <68dBA
- Dimensions: 300x806mm
- Weight: 14kg
- **CE, CB, ROHS** and **FCC** certified



600-T Product features

- Sleep mode and automatic night detection
- Real-time temperature & humidity
- Clear touchscreen control panel
- Remote & application control
- Super-easy filter replacement
- Automatic filter monitoring
- SMART or MANUAL mode
- Tip-over protection
- 4 air flow speeds
- Timer function
- Plug and play
- Child lock



Striving for perfection

We think Design is just as important as Functionality. Therefore we have created the perfect combination between Design and Functionality.



600-T WHITE

The AirExchange® 600-T White is executed in a white powder coated, steel housing.

Technical specifications:

- Maximum cleaning power (Clean Air Delivery Rate - CADR) of 600m³ / hour
- Cleans areas up to 100m²
- 220V / AC (50-60Hz)
- 85W power
- Standard noise level: <21dBA (almost silent)
- Maximum noise level: <68dBA
- Dimensions: 300x806mm
- Weight: 14kg
- **CE, CB, ROHS** and **FCC** certified



Filter set

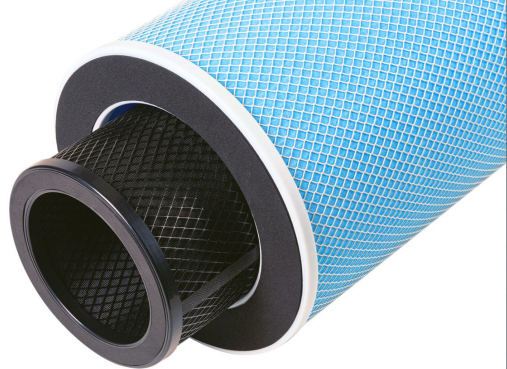
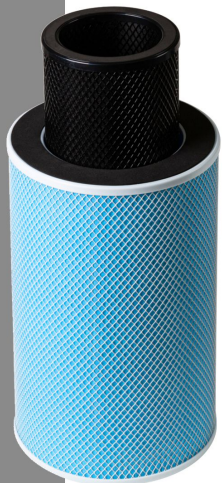
The filter set is suitable for both the AirExchange® 750-T and 600-T models.

The filter set consists of a combination of:

- Antibacterial Pre-filter with fiber mesh fabric and sterilization nonwoven fabric
- HEPA (medical class) H14 antimicrobial peptide filter with a filter surface of 7.2m²
- Carbon filter with activated carbon
- Photocatalytic TiO₂ (Titanium Dioxide) filter as a natural ionizer
- UV-C (253.7nm wavelength ultraviolet) lamp

Technical specifications:

- The lifespan of the filter set is on average 4500 hours
- Dimensions: 235x400mm
- Weight 2.2kg



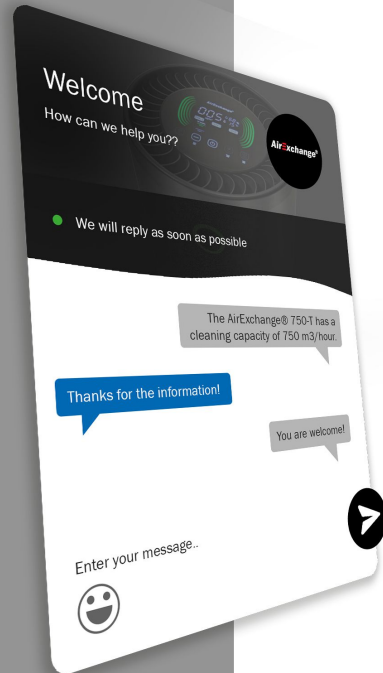
EASY filter replacement

The built-in, automatic filter guard informs you when the filter needs to be replaced. You can then easily replace the filter set in a short period of time.



Quality makes the product

Jamie Blankert
Founder of AirExchange®



We are always there for you!

Our key value is that you enjoy the AirExchange® system and you can use it without any worries or trouble.

Do you have any questions? Then you can contact us by phone, e-mail or via our chat function. We promise to respond quickly.

'Service without compromise and always with a broad smile'

